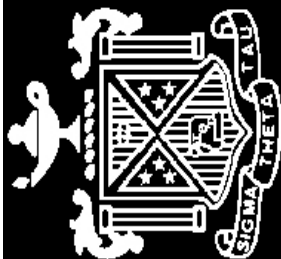


# DELTA

*Sigma Theta Tau International ~ Delta Tau Chapter-At-Large*



## *A Message From the President . . .*

As the new president of Delta Tau Chapter-At-Large I want to begin by thanking all of the Delta Tau members for giving me the opportunity to serve on the board. To take on this challenge can be a bit intimidating and overwhelming but it is truly an honor. I hope I live up to your expectations and together we can have two very productive years with Delta Tau.

During the last year, I served as president-elect and I attended meetings and events to observe the day-to-day operations of Delta Tau. This was all well and good but I often wondered what could I possibly bring to Delta Tau. I thought about the feeling of honor and pride I had when I was invited to join such a prestigious society of nurses. I thought about the six nurses from Indiana University who were so dedicated to excellence in nursing that they founded a society to foster their beliefs. I thought about the induction ceremony and the commitment each of us made that day. I thought of the enthusiasm and excitement. Where did all of this go?

For most of us it went by the wayside when we spent the first two years after graduation just trying to find the perfect nursing career. It disappeared as we finally had time for our families and friends again. Who had any money to pay the dues while we were paying off those school loans? We were establishing ourselves and making our way.

As I begin my term as president of Delta Tau I am asking you to come back to us. Join us in supporting the mission and goals of Sigma Theta Tau International. Take the time to be a part of something you valued not so long ago. We all have something to contribute to Delta Tau. Think back to that time when you were brimming with enthusiasm and excitement and bring that to our chapter. This year offers the perfect opportunity for you to become more involved with the chapter, as we will be celebrating the 20 years as a nursing honor society. We will also be extending our family and welcoming Eastern College into Delta Tau. Become an active member of Delta Tau Chapter-At-Large. We need you to succeed in the new millennium.

*Sally A. Russo, President Delta Tau Chapter-At-Large*

## *Inside Details . . .*

<i>Message from the President &amp; Calendar of Events</i>	<i>1</i>
<i>"Member Spotlight," News About Biennial Convention &amp; "Call for Abstracts" for Research Day</i>	<i>2 &amp; 3</i>
<i>Tri-State Consortium Brunch Info, Community Service Projects, Kudos, Newly Elected Officers, Outstanding Nurse Nominations, 20th Anniversary</i>	<i>4 &amp; 5</i>
<i>Updates about Eastern, Research Awards, "Humor for the Health of It" &amp; News &amp; Views...</i>	<i>6, 7 &amp; 8</i>

## **1999~2000 CALENDAR OF EVENTS**

**SEPTEMBER 26, 1999  
TRI-STATE  
CONSORTIUM BRUNCH**

**OCTOBER 21, 1999  
BOARD MEETING  
HOLY FAMILY COLLEGE**

**NOVEMBER 6-10, 1999  
BIENNIAL CONVENTION  
SAN DIEGO, CA**

**DECEMBER ?, 1999  
COMMUNITY SERVICE  
PROJECTS\***

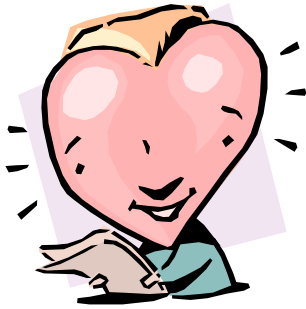
**MARCH 8, 2000  
BOARD MEETING – 5 PM  
PRE-INDUCTION PIZZA  
PARTY – 6:30 PM  
EASTERN COLLEGE**

**MARCH 14, 2000  
PRE-INDUCTION PIZZA  
PARTIES  
HOLY FAMILY COLLEGE  
NEUMANN COLLEGE  
4:30 PM  
AT EACH COLLEGE**

**APRIL 2, 2000  
20TH ANNIVERSARY  
INDUCTION CEREMONY  
& CHARTER  
AMENDMENT – 2 PM  
NEUMANN COLLEGE**

**APRIL 28, 2000  
EIGHTH ANNUAL  
RESEARCH DAY  
UNIVERSITY OF  
PENNSYLVANIA**

**JUNE 23, 2000  
ANNUAL BOARD  
PLANNING MEETING**



## *35th Biennial Convention San Diego '99*

**S**igma Theta Tau International will hold its 35<sup>th</sup> Biennial Convention November 6-10 at the Town & Country Resort & Convention Center in Mission Valley California. The convention is titled "Avenues to the Future" and is divided into three days with separate themes. We will explore what the new millennium holds in store for the nursing profession.

On Sunday November 7, the convention offers clinical sessions entitled "Innovations in Practice." This day focuses on advances in technology that effect our everyday lives as part of the health care team. Monday, November 8, features scientific sessions that explore our future and the challenges it holds. Tuesday, November 9, the leadership sessions provide us with practical skills for the future. The House of Delegates will meet on Wednesday, November 10 to wrap up the convention.

The hotel reservation deadline is **October 14, 1999**. Registration fees vary depending upon time of registration; the earlier you register the better the price. For more information, please contact Sigma Theta Tau International by calling 1-888-634-7575 or via e-mail: [education@stti.edu](mailto:education@stti.edu). Make a visit to Sigma Theta Tau International's new web page at: <http://www.nursingsociety.org> and see what the society has planned for the year!

## *Member Spotlight "There's Something About Mary..."*

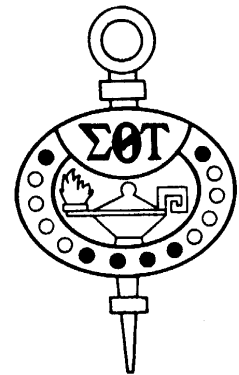
**M**ary M. Austin, RN, MSN, NHA earned her BSN from Neumann College in 1981, and her MSN from Villanova University in 1993.

Currently, Mary is the owner and president of Senior Pathways, Inc., a geriatric consultation service providing QA, education, and operational services to health care organizations. Senior Pathways also provides geriatric care management to individuals and families in nursing homes and home care situations. Mary's entrepreneurial spirit builds on her extensive clinical and administrative background in home care and long term care.

Previous to this venture, Mary was the Director of Nursing at the New Ralston House, a long term care facility in West Philadelphia, where she instituted many innovative OBRA regulations including restraint elimination. During this time Mary became licensed as a Nursing Home Administrator. Then in 1992 she became the director of Long Term Care Services for the Presbyterian Medical Center in Philadelphia overseeing two nursing homes, a home care agency, and other geriatric services.

Mary has been a member of Delta Tau Chapter-At-Large since we were chartered in 1980. She has served on the executive committee as corresponding secretary and awards committee chair. Currently she represents our chapter on the planning committee for the Philadelphia Area Annual Research Day.

In spotlighting Mary, her expansive nursing career, and her dedication to Delta Tau we thank her. Hats off to you Mary, we are fortunate to have you on our team!





# CALL FOR PAPERS

## EIGHTH ANNUAL RESEARCH CONFERENCE CLINICAL RESEARCH AND CLINICAL SCHOLARSHIP

**APRIL 28, 2000**

University of Pennsylvania  
Nursing Education Building  
420 Guardian Drive  
Philadelphia, PA 19104-6096

Abstracts related to nursing research using any methodology are invited. All topics may be submitted for poster or paper presentation, except research in progress which may be submitted for poster presentation only. The focus should be on clinical research and clinical scholarship - innovations and trends in nursing specialties, patient outcomes, community nursing, impact of technology, or current health problems such as AIDS. Papers and posters utilizing a multidisciplinary, collaborative approach are also welcomed.

Abstracts are to be camera ready, limited to one page and typed, single-spaced on one 8 1/2 by 11 sheet paper, margins 1 1/2 inches left, 1 inch bottom, top, and right. Abstracts will be blind reviewed according to the abstract guidelines. Submit 2 copies of the abstract without researcher(s) identification, 2 copies of the abstract with researcher identification, which should include name(s), degrees and affiliation. Send on a separate cover sheet the title, researcher(s)' name, affiliation, address, phone and fax numbers, preferred method of presentation and two learning objectives for your presentation.

**Abstract Guidelines:**

Title  
Purpose/Problem Statement  
Methodology  
Data Analysis  
Findings  
Implications for Nursing  
Presentation Time: 30 minutes

**Submit by January 21, 2000**

Mary Austin, MSN, RN  
305 Columbia Place  
Broomall, PA 19008  
Email: mmaustin@nni.com

**Notification: February 18, 2000**

Sponsors:

**NU ETA CHAPTER - MCP/HAHNEMANN UNIVERSITY  
KAPPA CHI CHAPTER - TEMPLE UNIVERSITY  
DELTA TAU CHAPTER -AT- LARGE - NEUMANN / HOLY FAMILY COLLEGES  
XI CHAPTER - UNIVERSITY OF PENNSYLVANIA  
DELTA RHO CHAPTER - THOMAS JEFFERSON UNIVERSITY  
KAPPA DELTA CHAPTER - LASALLE UNIVERSITY  
SIGMA THETA TAU INTERNATIONAL**



*Tri~State Consortium to hold 13th Annual Distinguished Lectureship Brunch*

In conjunction with 18 other chapters, Delta Tau Chapter-At-Large will be co-sponsoring the 13<sup>th</sup> Annual Distinguished Lectureship Brunch on Sunday, September 26, 1999 at 11:30AM at the Philadelphia Airport Radisson Hotel. The focus of this year's program will be "Strategies for Marketing Yourself to Organizations and the Public." Jane Century, MFA, an entrepreneur and specialist in communications has agreed to speak and share her "media savvy" and experience to assist nurses in marketing themselves to a wide array of associations. Delta Tau will be sponsoring a group of students to attend this informative event and will also be raffling off a "basket of Epicurean delights" as a fund-raising effort. We'll be happy to see you on the 26<sup>th</sup>!

*Community Service Projects ~ Our Annual Event!*

The holidays are a special time a year for all of us but wouldn't it be nice to make them extra special for someone in need? Delta Tau Chapter-At-Large will be sponsoring the third annual Christmas Party for the clients of the community center of Chester and Vicinity (CNC). The CNC serves the elderly who are in need in the Chester, PA and surrounding vicinities. This event has been very successful for the last two years and we hope to spread a little joy again this year.

We will also be sponsoring the second annual Christmas Party for the Holy Family Neighborhood Center (HFNC), which serves children and adults in need in the Frankford area.

Look for more details on our website at <http://www.libertynet.org/deltatau> so that you can be a part of these events as the holiday's approach!

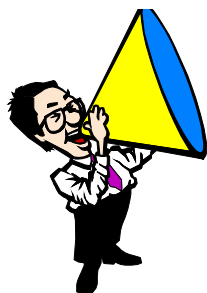
*Congratulations to Newly Elected Officers!*

**Treasurer:**  
**Frank Burgert,** BSN, CCRN, Holy Family College. Frank is returning as our resident "financial wizard." He brings much enthusiasm and experience to the maintenance of our fiscal resources. We look forward to welcoming back our "CFO."

**Vice President:**  
**Jacqueline Conaty,** RN, BSN, Neumann College. Jacqui brings motivation and an infusion of energy to our chapter! We look forward to the programs she will help coordinate for our 20<sup>th</sup> Anniversary.

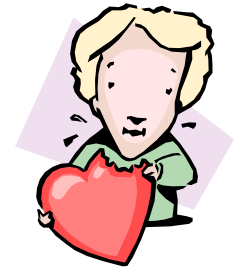
*20th Anniversary, Induction Ceremony and Charter Amendment!*

Delta Tau Chapter-At-Large will celebrate it's 20<sup>th</sup> Anniversary this year along with the 20<sup>th</sup> Annual Induction Ceremony on **April 2, 2000 at 2 PM in the Life Center at Neumann College.** Delta Tau's charter will be amended and Eastern College will officially become a part of Delta Tau Chapter-At-Large. The ceremony will introduce and welcome new members and recognize recipients of the Undergraduate and Graduate Scholarship Awards. The Research Grant Award, the Outstanding Nurse Award, and the President's Award will also be presented. Mark your calendar and join us in celebrating this momentous occasion. It promises to be an extraordinarily exciting and educational event. Please contact Sally Russo if you would like to assist with planning this event!



San Diego, 1999 – one of "our own" - **Dr. Diana Newman,** Associate Professor of Nursing at Neumann College, has thrown her hat into the campaign ring! Diana is vying for a position on the Nominating Committee of the International Board of Sigma Theta Tau. Delta Tau fully supports Diana in her candidacy & KNOWS that she will be a stellar asset to the International Board! We look forward to reporting the "positive election results" after the Biennial Convention! Our best wishes & support go out to Diana!

# 1999~2000 Outstanding Nurse Award Nomination Form



**CRITERIA:** BSN Degree (minimum)

Candidate must make a significant contribution in the area of nursing practice, research, leadership, or education

**NOMINEE:**

Name: \_\_\_\_\_

Address: \_\_\_\_\_

City: \_\_\_\_\_ State: \_\_\_\_\_ Zip: \_\_\_\_\_ Phone: H- \_\_\_\_\_

Institution/Organization: \_\_\_\_\_

Position : \_\_\_\_\_ Phone (H): \_\_\_\_\_

Degree: \_\_\_\_\_ College/University: \_\_\_\_\_

Member of Sigma Theta Tau? \_\_\_ Yes \_\_\_ No      If yes, Chapter affiliation \_\_\_\_\_

**Reason for Nomination:** Please address specifically how nominee has contributed to the nursing profession (refer to criteria).

\_\_\_\_\_

\_\_\_\_\_

\_\_\_\_\_

\_\_\_\_\_

\_\_\_\_\_

\_\_\_\_\_

\_\_\_\_\_

\_\_\_\_\_

**NOMINATOR:**

Name: \_\_\_\_\_

Address: \_\_\_\_\_

City: \_\_\_\_\_ State: \_\_\_\_\_ Zip: \_\_\_\_\_ Phone: H- \_\_\_\_\_

Signature: \_\_\_\_\_ Date: \_\_\_\_\_

**DEADLINE:** December 3, 1999 ~ Send in your nomination & include a \$5.00 donation (if you like) payable to Delta Tau Chapter-At-Large to support our Holiday Community Service Projects!

Delta Tau Outstanding Nurse Nomination  
1999~2000

Sally A. Russo  
8 Bowie Drive  
Wilmington, DE 19808

---

---

---

PLEASE SEND YOUR NOMINATION FORM BY:

**December 3, 1999**



*Congratulations  
to  
Newly Elected  
Officers!*

**N**ominating Chair: **Michele Sellers, MSN, CNRN**, Neumann College. Michele brings a variety of experience and a new perspective to the board of Delta Tau. We eagerly anticipate her "vision of excellence" for the new millennium.

**H**oly Family College Counselor: **Jean Brown, MA, RN**, Assistant Professor Student Affairs Chair of Nursing, Holy Family College. Jean will contribute her in-depth knowledge and leadership in helping students pursue excellence through membership in Delta Tau.

*Delta Tau  
Welcomes  
Eastern College!*

**A**mazingly, it has been 5 years since the prospect of amending Delta Tau's charter to include Eastern College into the Chapter was first investigated. The process proved to be a bit arduous, but certainly worthwhile. Over the past several years, both Delta Tau's Executive Board and the officers of Eastern's Nursing Honor Society have embraced the opportunity to collaborate and lay the foundation for a strong and equally beneficial alliance. Both entities feel confident that in an era when health care is in such transition and a projected nursing shortage is imminent, strengthening Delta Tau Chapter-At-Large by increasing the membership pool as well as infusing the chapter with new ideas, personalities, and talents is truly a win-win situation. On April 2, 2000, Delta Tau Chapter-At-Large will formally welcome Eastern College into the Chapter in a Charter Amendment Ceremony. The event promises to be an exciting and memorable occasion as we will be honored to have a representative from Sigma Theta Tau International in attendance. We hope to see many of you come to help us celebrate Delta Tau's rich past, present, and very bright future!!!

*1999~2000  
Research Grant  
Award*

**D**elta Tau Chapter-At-Large will award one Research Grant during the 1999-2000 year. This award will be in the amount of \$500 and will be given directly to the recipient to be used toward the research project. Deadline for the application is January 10, 2000. This award will be presented at the 20<sup>th</sup> Anniversary & Induction Ceremony on April 2, 2000, in the Life Center at Neumann College. In order to be eligible, the applicant must:

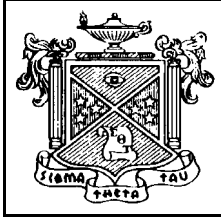
1. Be a member of Delta Tau Chapter-At-Large
2. Submit Proposal Abstract (limited to 4 pages)

To receive an application and further information/criteria about the research grant, please contact:

**Mary Austin  
305 Columbia Place  
Broomall, PA 19008**

*Jest for the Health of It ~ Humor from Wiley & The Washington Post*



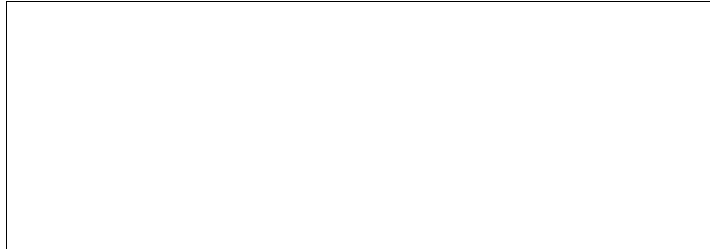


**Sigma Theta Tau  
International**

Delta Tau Chapter~At~Large  
2034 Silverwood Drive  
Newtown, PA 18940

**Delta Tau Chapter Officers**

*Sally A. Russo, President*  
*Eileen M. Alexy, Vice President, HFC*  
*Jacqueline Conaty, Vice President, NC*  
*Danielle Pierson, Secretary*  
*Frank Burgert, Treasurer*  
*Diane Wieland, Counselor, NC*  
*Jean Brown, Counselor, HFC*  
*Barbara McGuinness,*  
*Publicity/Newsletter Committee*  
*Karen T. Bruchak,*  
*Awards Selection Committee*  
*Mary Austin,*  
*Research Committee*  
*Michele Sellers,*  
*Nominating Committee*



**In this issue:**

**APRIL 2, 2000 – Save this date & come join the CELEBRATION!**

**CELEBRATE  
NURSING'S**



**AND  
CLAIM  
THE  
FUTURE**

*News & Views...*

*About Our Global Nursing Community*

This past summer history was made in London as the International Council of Nurses (ICN) celebrated 100 years of nursing and healthcare. The Royal College of Nursing (RCN) hosted the centennial celebration, complete with a “grand opening ceremony” at Royal Albert Hall.

The ICN was founded 100 years ago in London and is now a federation of 118 national nurses’ associations representing millions of nurses around the world. The introduction of organized professional nursing only became a reality during the late 19th century. It was in an environment of great social change that a handful of women visualized a new dimension of nursing. During that time of upheaval, the fight for women’s rights and the development of organized nursing brought together ICN’s forward thinking founders;

Ethel Gordon Fenwick (England), Lavinia Dock (USA) and Agnes Karll (Germany) giving birth to the world’s first international organization for health professionals and for women.

The ICN is guided by two key goals and five core values that motivate its activity. These goals are to influence health and nursing globally and to strengthen national nurses' associations. The five core values include visionary leadership, inclusiveness, flexibility, partnership and achievement. The ICN is headquartered in Geneva, Switzerland and its next conference is scheduled for 2001 in Copenhagen.

For more information about this historic organization and upcoming events visit the ICN website at:

<http://www.icn.ch/>